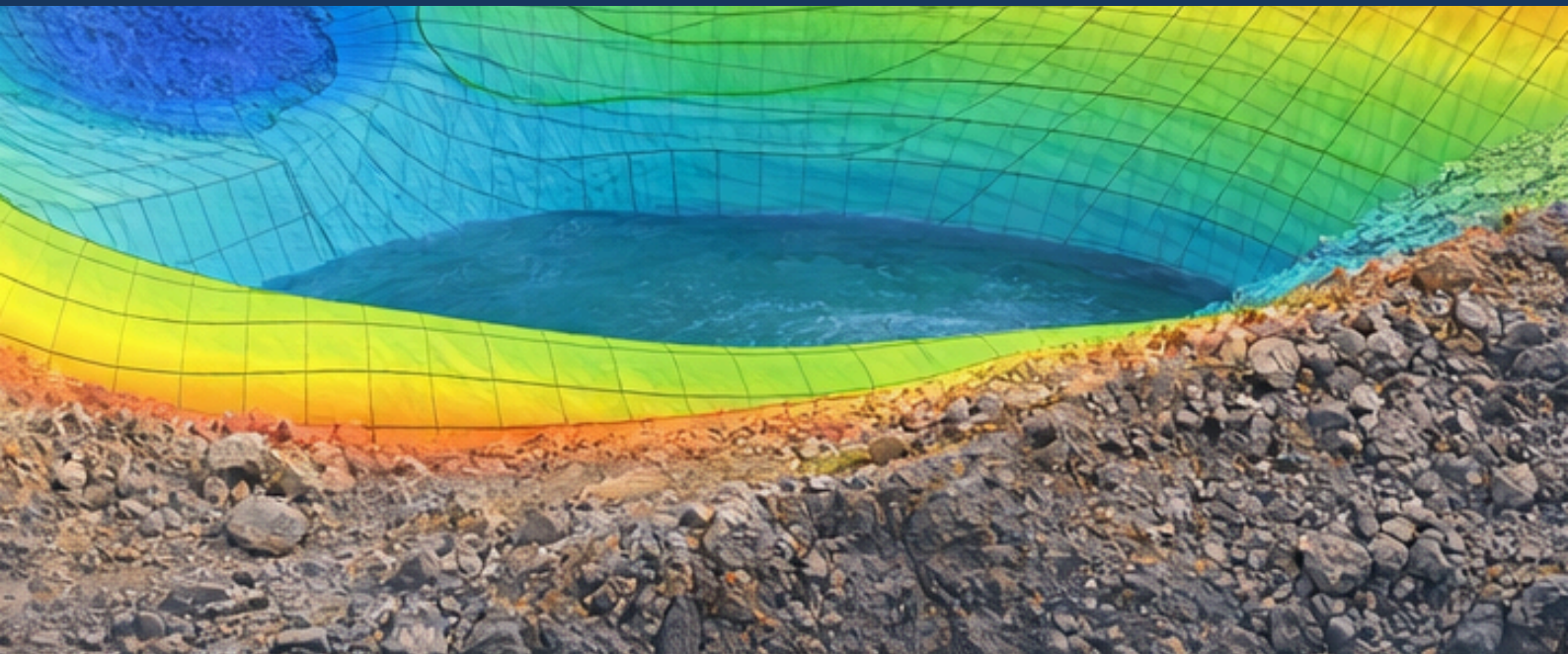




EARLY-BIRD
R2999
 in-Person
 2 Days

SLOPE STABILITY X26

Conference and Expo, 14th and 15th May 2026
 CSIR Pretoria



Sponsors and Exhibitors

Supporting Partners



Open Business Group

SLOPE STABILITY X26

Conference and Expo, 14th and 15th May 2026 CSIR Pretoria



Dear Delegate

As infrastructure, mining operations, and critical assets face increasing geotechnical risk, the Slope Stability International Conference brings together leading engineers, geologists, and technology innovators to explore the future of slope risk management and resilient design.

The programme features 24 technical experts from major engineering projects, global mining operations, startups, and technology companies addressing real-world slope stability challenges.

The event includes two technical workshops, two keynote sessions, and a dynamic programme of interactive panels, fireside chats, and collaborative discussions, with breakout sessions to follow.

This conference creates a platform for engineering insight, innovation, and cross-industry collaboration focused on solving complex slope stability challenges.

See You There!

Keynote highlights



LEHANA BULANE,
GEOTECHNICAL ENGINEER,
LETŠENG DIAMOND MINE,
LESOTHO



KABO GABANAKGOSI
MAUSIMM CP(GEOTECH),
PRINCIPAL GEOTECHNICAL
ENGINEER, DEBSWANA
DIAMOND COMPANY,
BOTSWANA



MPUMELELO THABETHE
CHIEF GEOLOGIST,
NORTHAM PLATINUM
SOUTH AFRICA



OVHESHLAN PILLAY,
LECTURER & SANIRE GP
CHAIRPERSON, SOUTH
AFRICA



NYELETI MASOLE, CHIEF
ROCK ENGINEER, FOSKOR,
SOUTH AFRICA



KHOMOTSO MOLEKE, CEO,
M84 GEOTECH SOLUTIONS
PTY LTD



DR. MORTEZA
GHAMGOSAR, SENIOR
ASSOCIATE, ATC
WILLIAMS, AUSTRALIA



THLOLOGELO MAMETJA,
CHIEF ROCK ENGINEER,
VALTERRA PLATINUM,
SOUTH AFRICA



CHRISTINE THIKUSHO,
SENIOR GEOTECHNICAL
GEOLOGIST, SWAKOP
URANIUM, NAMIBIA



HAMILTON MOSWATHUPA,
REGIONAL MANAGER:
HYDROGEOLOGY, ANGLO
AMERICAN SOUTH AFRICA.



DAVID NYUNGU
GEOTECHNICAL ENGINEER,
BARRICK GOLD
CORPORATION,
DEMOCRATIC REPUBLIC OF
CONGO



JOHAN DU PLESSIS
TECHNICAL CONSULTANT,
STRUCTURAL ENGINEER,
PROKON SA (PTY) LTD,
SOUTH AFRICA

DAY 1 — THURSDAY, 14 MAY 2026.

Investigation → Design → Execution

07:30 – 08:30 **Arrival Coffee & Networking**

08:30 – 08:45 **Opening Address – Conference Chairperson - Exploring the industry's risk landscape and defining urgent geotechnical priorities**
Speaker to be announced

08:45 – 09:15 **Opening Keynote: Industry Outlook 2026 - Global priorities | Risk exposure trends | Why failures still happen**
Speaker to be announced

9:15 - 11:45 **SESSION 1: INVESTIGATION & GEOLOGICAL UNDERSTANDING**
Session 1 sets the foundation for this year's conference focusing on the critical first phase of slope stability: understanding the ground before any design or operation begins. In mining and geotechnical engineering, reliable slope performance depends on the quality of investigation data, the accuracy of geological models, and the integration of hydrogeological and structural factors into decision-making.

Multiple Speakers

09:15 – 09:45 **Challenges in Geotechnical Design – From Site Investigation to Construction**

This presentation would explore the complexities of geotechnical material characterisation, the selection of design parameters, and the identification of critical aspects of material behaviour. It would also include insights into construction-stage expectations, lessons learned, and relevant case studies.

Dr. Morteza Ghamgosar
Senior Associate - ATC Williams Australia

09:45 – 10:15 **Hydrogeology in Mine Stability**

Hamilton Moswathupa,
Regional Manager: Hydrogeology, Anglo American South Africa.

10:15 – 10:45 **Morning Tea & Networking**

10:45 - 13:00 **DAY 1 SPONSORED SIGNATURE SESSIONS**

- **Fireside chats + Interactive Panels and Hybrid Workshops Stream A:**
Failure Modes and Risk-Based Decision Making in Embankment Slope Design
Day 1 Signature Sessions are designed to be engaging, interactive and a thought-provoking component of the conference — This topic would focus on embankment failure risks and preparedness during both design-construction and operational phases, with an emphasis on risk assessment and mitigation strategies, based on the best practices and guidelines.

10:45 – 11:15 **Exploring Structural Influence in Slope Stability Analysis**

- Structural control and slope instability mechanisms.
- Integrating structural data into slope stability analysis.
- Case Study: Letšeng Diamond mine application.
- Advancing slope design through structural characterisation.

Lehana Bulane
Geotechnical Engineer, Letšeng Diamond Mine, Lesotho

11:15 – 11:45 **Strategic Geotechnical Oversight**
Lessons from integrating geotechnical practices across open pits and mineral residue facilities.

Kabo Gabanakgosi
Principal Geotechnical Engineer
Debswana Diamond Company

"FROM GROUND UNDERSTANDING TO ENGINEERING REALITY"

11:45- 12:15 **SPONSORED SESSION — HOW DO YOU DESIGN ROCKFALL PROTECTION SYSTEMS THAT ACTUALLY PERFORM IN THE FIELD?**

- Hazard identification and rock mass characterisation
- Rockfall trajectory modelling
- Barrier energy classification
- Certified installation practices
- Monitoring strategies for long-term slope performance.

Khomotso Moleke, CEO
M84 Geotech Solutions Pty Ltd

12:15- 13:00 **Soil Characterisation Keynote - From Field to Failure: How Soil Characterisation Quality Determines Slope Performance**

Moses Skosana Pr.Sci.Nat
Geometallurgist and Geotechnical Engineer
Anglo American South Africa

13:00 – 14:00 **Lunch & Networking**

SESSION 2: DESIGN, MODELLING & ENGINEERING SYSTEMS

Session 2 shifts the focus from understanding the ground to engineering how it performs. It explores how geotechnical data is translated into robust, reliable designs through advanced modelling techniques, analytical methods, and integrated engineering systems.

14:00 - 14:30 **From Principles to Probability: Rethinking Open Pit Mine Design**

As the industry evolves, so must our design philosophy. This presentation revisits the fundamentals of open pit mine design through the lens of simplicity, reliability and risk. It considers how acceptance criteria and geotechnical models can be re-imagined through probabilistic thinking, shifting from deterministic certainty to informed confidence.

Ovheshlan Pillay,
Lecturer & SANIRE GP Chairperson, South Africa

14:30- 15:00 **Are models reflecting reality—or simplifying risk?**
Speaker to be announced

15:00 – 15:30 **Mid-Afternoon Tea & Networking**

15:30- 16:30 **SESSION 3: Execution & Operational Reality**
Closing the gap between design and site execution,
Multiple Speakers, Featured Talks -

15:30- 16:00 **Keynote Optimising Highwall Stability —**

Thlologelo Mametja
Chief Rock Engineer, Valterra Platinum, South Africa

16:00 - 16:30 **Panel: Post-Construction Regulations & Enforcement - Regulators | Operators | Engineers**

- What governing regulations apply to post-construction mining operations, specifically regarding supporting infrastructure rather than the mining activities themselves?
- Are there any regulations requiring the ongoing monitoring of infrastructure? (Include reference to an American case study.)
- Which authorities or entities are responsible for enforcing these regulations, and to what extent is enforcement currently taking place?
- What gaps exist in the current regulatory framework, and what changes are necessary to improve oversight and compliance?

Panel Host - Johan Du Plessis
Technical Consultant, Structural Engineer,
Prakon SA (Pty) Ltd, South Africa

16:30 - 16:40 **CLOSING REMARKS AND END OF DAY 1**

17:30 – 19:00 **WELCOME COCKTAIL & STRATEGIC NETWORKING**

DAY 2 — FRIDAY, 14 MAY 2026.

MONITORING → PERFORMANCE → FUTURE

“FROM DATA TO DECISIONS IN SLOPE STABILITY”

07:30 – 08:30 **Arrival Coffee & Networking**

08:30 – 08:45 **Opening Address – Conference Chairperson - Exploring the industry's risk landscape and defining urgent geotechnical priorities**
Speaker to be announced

08:45 – 09:15 **Opening Keynote: From Strategy to Site: Executing Slope Stability in a Data-Driven World**
Speaker to be announced

9:15 - 11:45 **SESSION 4: Monitoring Systems & Data Integration**
Session 4 explores trending technologies and the latest in Real-time monitoring | Adaptive engineering | Early risk detection

- Key Talks from Multiple Speakers

09:15 – 09:45 **Monitoring and Assessing Pit Wall Stability: Integrating Radar, Prisms, InSAR, and Field Investigations**

This presentation draws on Christine's experience coordinating final wall assessments, bench failure analysis, and high wall approach training.

Christine Thikusho Pr.Sci.Nat
Senior Geotechnical Geologist | Swakop Uranium, Namibia

09:45 – 10:15 **KEY CONSIDERATIONS FOR EFFECTIVE SLOPE PERFORMANCE MONITORING: A CASE STUDY**

Defining objectives, selecting technology, and integrating monitoring systems into operations. **Abstract:** - Slope instability continues to cause significant challenges in surface mining and slope failures constitute risks to personnel and the long-term stability of mining operations. An effective monitoring system enables early detection of possible problems, supports early intervention, and advances informed, risk-based decisions.

Nyeleti Masole
Chief Rock Engineer, Foskor, South Africa

10:15 – 10:45 **Morning Tea & Networking**

10:45 – 11:45 **DAY 2 SIGNATURE SESSION - Fireside chats + Interactive Panels and Hybrid Workshops STREAM B: "Digital Twins, AI & the Future of Slope Stability"**

Day 2 Signature Sessions are designed to be an industry collaboration and solution-finding component of the conference — bringing together industry leaders, technical experts, and solution providers to confront a critical question posed by you:

Why do slopes still fail, even when designs meet technical standards?
These sessions move beyond traditional presentations into real dialogue, live problem-solving, and practical collaboration over live-recording. Through a mix of fireside chats, expert panels, and hands-on hybrid workshops, delegates will connect, engage and explore new and emerging solutions aligned to their operational realities

Multiple Speakers

10:45- 11:15 **Monitoring Systems Hybrid Panel**
Immersive Panel Discussion on Slope Stability Monitoring Systems
This hands-on interactive panel explores how radar, InSAR, and drone technologies are transforming slope monitoring through integrated, real-time data workflows. Designed for practical application, the panel aims to harness expert insights to demonstrate how combining multiple systems enhance visibility, accuracy, and response time to address slope failures.

The session bridges innovation with operational implementation and uncovers the integrated implementation link to sourcing, selection and deploying fit-for-purpose monitoring technologies.

Featuring Local OEMs and Mining Technology Partners

11:15- 11:45 **Interactive Technical Presentation on adapting and integrating emerging technologies with Slope Stability Monitoring & Operations** - Interactive Technical Presentation on adapting and integrating emerging technologies with Slope Stability Monitoring & Operations.

The presentation will explore how machine learning, AI, and big data—enabled by IoT sensor networks, cloud and multi-cloud architectures—are transforming real-time slope monitoring into predictive, adaptive systems.

It will highlight how secure, scalable platforms (including cybersecurity considerations) accelerate the adoption of emerging technologies, enabling faster insights, flexible operations, and more responsive, data-driven interventions to enhance slope performance in complex mining and infrastructure environments

Sponsored Session

11:45 - 13:00 **SESSION 5: PERFORMANCE & GEOLOGICAL RISK**

Exploring how integrated monitoring systems and real-time data enhance confidence in slope performance, this session highlights adaptive engineering practices that enable proactive decision-making, early risk detection, and continuous design refinement—bridging uncertainty with actionable insight for safer, more resilient operations.

11:45- 12:15 **Geological Drivers of Slope Instability in Platinum Mining: From Structural Complexity to Operational Risk (A Platinum Case)**

- Geological Drivers of Slope Instability in Platinum Mining: From Structural Complexity to Operational Risk
- Understanding Geological Complexity in the Bushveld
- From Geological Model to Engineering Risk.
- Improving Prediction Through Geological Intelligence.

Mpumelelo Thabethe
Chief Geologist, Northam Platinum South Africa

12:15 - 13:00 **Technology & Innovation in Ground Support and What's Changing—and What Actually Works?**

- Unpacking a few advances in materials and reinforcement systems, including hybrid support solutions
- Defining the growing role of digital tools, simulation, and predictive modelling
- How to evaluate new technologies against real operational performance
- Deciding what to avoid over-engineering while still improving safety and efficiency
- Adopting Innovation to strengthen performance—not complicate it

David Nyungu
Geotechnical Engineer, Barrick Gold Corporation, Democratic Republic of Congo

13:00 – 14:00 **Lunch & Networking**

14:00- 14:30 **SPONSORED SESSION: Closing the Loop: Integrating Design, Monitoring, and Operations for Real-Time Risk Control**
Theme: Combining Geotechnical Reality and The Economics of Execution
SPONSORED SESSION

14:30- 15:00 **From Monitoring to Action: Operationalising Data for Real-Time Geological Risk Control**
SPONSORED SESSION

15:00 – 15:30 **Mid-Afternoon Tea & Networking**

15:30- 16:30 **Closing Interactive Panel: Performance & Geological Risk in Practice Industry + Government + Technology | Interactive Hybrid Panel**

16:30 - 16:40 **CLOSING REMARKS AND END OF DAY 2**

17:30 – 19:00 **FAREWELL COCKTAIL & STRATEGIC NETWORKING**

DAY TWO - PROGRAMME

SLOPE STABILITY X26

SLOPE STABILITY CONFERENCE AND EXPO - 14 & 15 May 2026, CSIR PRETORIA

EARLY-BIRD REGISTRATION FORM

Thank you for your interest in the course. To register, please provide the following information

Delegate(s) Information

1. Dr. /Mr. /Mrs. /Miss:		Email:	
Department:		Mobile:	
Position:			
2. Dr. /Mr. /Mrs. /Miss:		Email:	
Department:		Mobile:	
Position:			
3. Dr. /Mr. /Mrs. /Miss:		Email:	
Department:		Mobile:	
Position:			
4. Dr. /Mr. /Mrs. /Miss:		Email:	
Department:		Mobile:	
Position:			

Register Me / Us / Team for The Following / Please Select the Selection of your Choice

2 Days In-Person = ZAR 2,999.00 excl. VAT

2 Day Online = ZAR 1,999.00 excl. VAT

Student/ Educator 2 Days In-Person
= ZAR 1 999.00 excl. VAT

Student/ Educator 2 Days Online
= ZAR 999.00 excl. VAT

Early-Bird Prices are valid until 30th April 2026

Signatory must be authorised to sign on behalf of contracting organisation

Name:		Position:	
Organization:		Email:	
VAT No.		Mobile:	
Telephone:		Facsimile:	
Physical Address:		Code:	
Postal Address:		Code:	
Signature:			

THIS BOOKING IS INVALID WITHOUT A SIGNATURE

Terms and Conditions

ACCEPTED APPLICATIONS TO ATTEND AN OPEN BUSINESS GROUP CONFERENCE OR TRAINING COURSE ("EVENT") ARE IN EVERY CASE SUBJECT TO THESE TERMS AND CONDITIONS. **PAYMENT:** TO AVOID DISAPPOINTMENT, ENSURE PAYMENT IS MADE BEFORE THE EVENT STARTS. OPEN BUSINESS GROUP RESERVES THE RIGHT TO ADMIT OR REFUSE ADMISSION TO DELEGATES WHO HAVE NOT SHOWN PROOF OF PAYMENT OF CONFERENCE FEES OR NOT AGREED TO SIGN AN PAYMENT IS DUE IN FULL UPON COMPLETION AND RETURN OF THE SIGNED REGISTRATION FORM. DUE TO LIMITED CONFERENCE SPACE NO ATTENDEE WILL BE ADMITTED INTO AN EVENT WITHOUT PRIOR CONFIRMATION OR PAYMENT.

SPEAKERS - VIEWS OF SPEAKERS AT ANY CONFERENCE OR TRAINING COURSE - ARE THEIR OWN AND DO NOT NECESSARILY REFLECT THE VIEWS OF OPEN BUSINESS GROUP, ITS EMPLOYEES, AGENTS OR CONTRACTORS.

DELEGATE SUBSTITUTIONS - PROVIDED THE FEE HAS BEEN PAID IN FULL, WITHIN THE TIME FRAME AS PER OUR TERMS AND CONDITIONS, SUBSTITUTIONS AT NO EXTRA CHARGE CAN BE MADE UP TO 10 WORKING DAYS, BEFORE THE START OF THE EVENT. (SEND NOTIFICATION FOR ANY SUCH CHANGES IN WRITING FOR THE ATTENTION OF THE CUSTOMER SERVICES MANAGER AT INFO@THEOPENBUSINESSGROUP.COM). DELEGATE

CANCELLATIONS - MUST BE RECEIVED BY OPEN BUSINESS GROUP IN WRITING AND MUST BE ADDRESSED TO THE CUSTOMER SERVICES MANAGER AT INFO@THEOPENBUSINESSGROUP.COM. CANCELLATIONS RECEIVED 10 WORKING DAYS BEFORE EVENT START-DATE, ENTITLE THE CANCELLING DELEGATE TO A FULL CREDIT OF AMOUNTS (CREDIT TO ATTEND FUTURE EVENT - NOT REFUND MONIES) PAID TO DATE OF CANCELLATION WHICH MAY ONLY BE REDEEMED AGAINST THE COST OF ANY FUTURE OPEN BUSINESS GROUP EVENT, WITHIN ONE YEAR FROM DATE OF SUCH CANCELLATION; CANCELLATION WHICH MAY ONLY BE REDEEMED AGAINST THE COST OF ANY FUTURE OPEN BUSINESS GROUP EVENT, WITHIN ONE YEAR FROM DATE OF SUCH **CANCELLATION:** - ANY CANCELLATIONS RECEIVED LESS THAN 10 WORKING DAYS BEFORE THE EVENT START-DATE, DO NOT ENTITLE THE CANCELLING DELEGATE TO ANY REFUND OR CREDIT NOTE AND THE FULL FEE MUST BE PAID; NON-ATTENDANCE WITHOUT WRITTEN CANCELLATION TO THE CUSTOMER SERVICES MANAGER IS TREATED AS A CANCELLATION WITH NO ENTITLEMENT TO ANY REFUND OR CREDIT.

SPEAKER / EVENT CHANGES - OCCASIONALLY IT IS NECESSARY FOR REASONS BEYOND OUR CONTROL TO ALTER THE CONTENT AND TIMING OF THE PROGRAMME OR THE IDENTITY OF THE SPEAKERS. IF OPEN BUSINESS

GROUP CANCELS AN EVENT, OR CHANGES SPEAKERS; DELEGATE PAYMENTS AT THE DATE OF CANCELLATION WILL BE CREDITED TO A OPEN BUSINESS GROUP EVENT (SUCH CREDIT IS AVAILABLE FOR UP TO ONE YEAR FROM THE DATE OF CANCELLATION, FOR WHICH OPEN BUSINESS GROUP IS OBLIGATED TO PROVIDE ALTERNATIVE DATES AND OR SPEAKERS FOR THE EVENT).

IF OPEN BUSINESS GROUP POSTPONES AN EVENT, DELEGATE PAYMENTS AT THE POSTPONEMENT DATE WILL BE CREDITED TOWARDS THE RESCHEDULED EVENT. IF THE DELEGATE IS UNABLE TO ATTEND THE RESCHEDULED EVENT, THE DELEGATE WILL RECEIVE A FULL CREDIT OF AMOUNTS PAID UP TO THE DATE OF POSTPONEMENT WHICH MAY ONLY BE REDEEMED AGAINST THE COST OF ANY FUTURE OPEN BUSINESS GROUP EVENT (AND SUCH CREDIT WILL BE AVAILABLE FOR ONE YEAR FROM THE DATE OF POSTPONEMENT). NO CASH REFUNDS WHATSOEVER ARE AVAILABLE FOR CANCELLATIONS OR POSTPONEMENTS.

INDEMNITY - OPEN BUSINESS GROUP IS ABSOLVED FROM AND INDEMNIFIED AGAINST ANY LOSS OR DAMAGE AS A RESULT OF SUBSTITUTION, ALTERATION OR CANCELLATION/POSTPONEMENT OF AN EVENT ARISING FROM ANY CAUSE WHATSOEVER, INCLUDING, WITHOUT LIMITATION, ANY FORTUITOUS EVENT, ACT OF GOD, UNFORESEEN OCCURRENCE OR ANY OTHER EVENT THAT RENDERS PERFORMANCE OF THE EVENT IMPRACTICABLE OR IMPOSSIBLE. A "FORTUITOUS EVENT" INCLUDES, BUT IS NOT LIMITED TO, WAR, FIRE, FLOOD, RIOT, INDUSTRIAL ACTION, EXTREME WEATHER OR OTHER SIMILAR AND UNFORESEEN EMERGENCIES.

WARRANTY OF AUTHORITY - THE SIGNATORY WARRANTS THAT HE/SHE HAS THE AUTHORITY TO SIGN THIS APPLICATION AND AGREES TO BE PERSONALLY LIABLE TO OPEN BUSINESS GROUP FOR PAYMENTS FALLING DUE PURSUANT THERETO SHOULD SUCH WARRANTY BE BREACHED



Tel: +27 10 502 1934 Mobile: +27 (0) 82 425 5482
Email: george@theopenbusinessgroup.com Website:
www.theopenbusinessgroup.com

DOWNLOAD AND COMPLETE THE FORM THEN EMAIL US
THE SIGNED FORM TO BOOK YOUR SEAT.

Open Business Group